



nordic edge

OTP Server
Integration Module
Citrix® XenApp 5.1™

Copyright Nordic Edge, 2009

About Nordic Edge®

Nordic Edge® AB was founded in Stockholm, Sweden, 2002.

Nordic Edge® develops powerful Applications that enable Organizations to protect, manage and distribute business critical information. By offering our Customers our products, we contribute to an improved result and decreased costs that in turn leads to an increased competitiveness.

Trademarks

Nordic Edge is a registered trademark of Nordic Edge AB in Sweden.

All third-party trademarks are the property of their respective owners.

1. Table of Contents

Introduction	4
OTP Server Overview	4
Citrix® XenApp 5.1™ Integration Overview	4
Pre-requisites and System Requirements	4
Citrix	4
OTP Server	4
Installation	5
Installing the integration module	5
Files needed	5
Installing	5
Configuration	6
Citrix XenApp 5.1 Configuration.....	6
Administration	6
Configuring the NordicEdge® OTP-Server	7
Appendix A: Misc	10
Troubleshooting.....	10

2. Introduction

2.1. OTP Server Overview

Nordic Edge OTP Server adds an extra security layer to protect your applications. When the user id and password is successfully verified, a “One Time Password” is sent to the user’s mailbox or mobile phone through SMS (Short Message Services). This “One Time Password” will be verified and only then will the user be authenticated to the application.

2.2. Citrix® XenApp 5.1™ Integration Overview

Citrix® XenApp 5.1™ integration module for NordicEdge One Time Password Server™ enables strong authentication for Citrix Web Interface.

2.3. Pre-requisites and System Requirements

2.3.1. Citrix

Their integrations require Citrix® XenApp 5.1™.

2.3.2. OTP Server

OTP Server 14C or higher.

OTP Server must be configured before the filter can be used. See OTP Server Administration Manual for more information on how to configure this.

3. Installation

3.1. Installing the integration module

3.1.1. Files needed

otp4citrixXenApp5.1.zip

3.1.2. Installing

1. Download the latest package and the latest revision of this document from the NordicEdge One Time Password Server TM product site.
2. Backup the Citrix web root, c:\Inetpub\wwwroot\Citrix (default location)
3. Unpack the zipfile contents to c:\Inetpub\wwwroot\Citrix
4. If the NordicEdge One Time Password Server TM is installed on another machine than the Web Interface, change /XenApp/auth/loginOTP.aspx to point to the correct server ip-address or hostname. It is configured to 127.0.0.1:3100 by default.
5. Edit web.config (sample place C:\Inetpub\wwwroot\Citrix\XenApp), make sure to add:
/auth/loginOTP.aspx
to key "AUTH:UNPROTECTED_PAGES", like:
<add key="AUTH:UNPROTECTED_PAGES" value="/auth/loginOTP.aspx,/rade.aspx,.....

4. Configuration

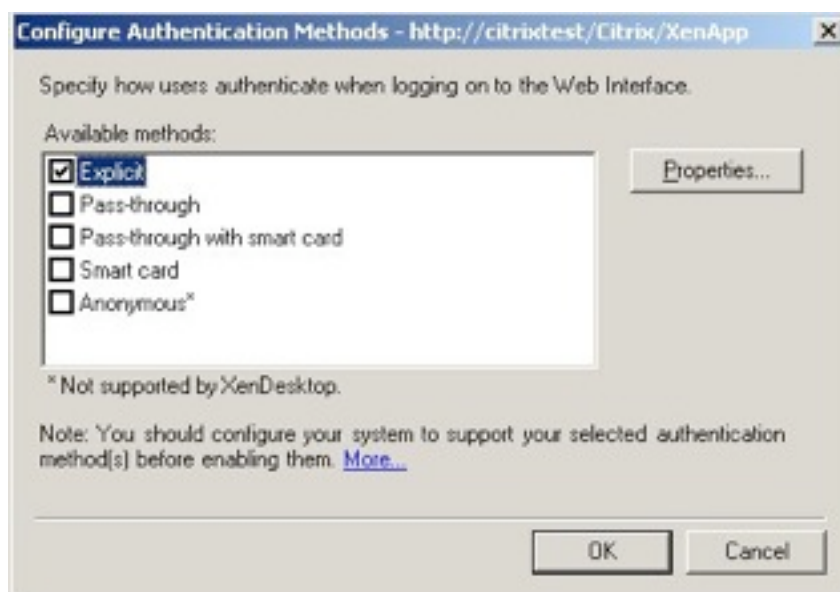
4.1. Citrix XenApp 5.1 Configuration

4.1.1. Administration

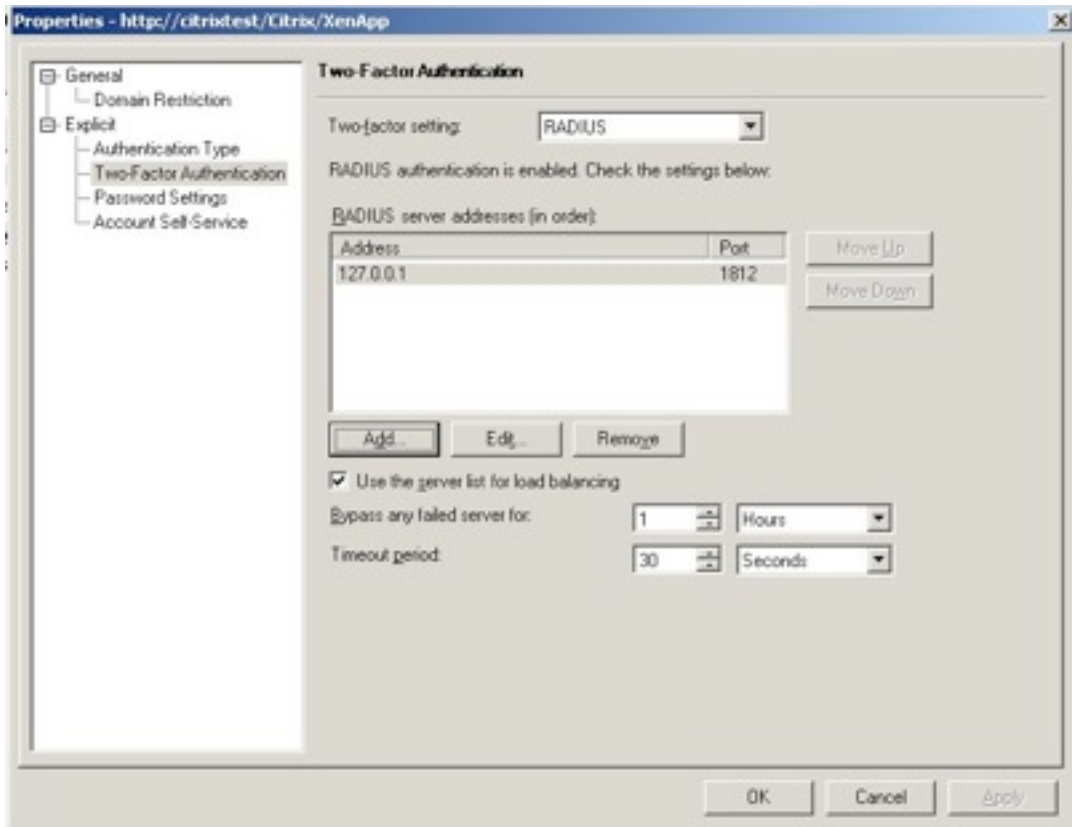
1. Start Citrix Access Management Console
2. Browse to "Citrix Resources"->"Configuration Tools"->"Web Interface" and select the web interface where the integration is installed



3. Click on "Configure authentication methods"
4. Select Explicit, and press "Properties"



5. Select "Two-Factor Authentication"
6. In the drop-down "Two-factor Setting", select "RADIUS"
7. Click on "Add"
8. Enter IP address of OTP server (127.0.0.1 if OTP server is installed on same machine)
9. Select RADIUS port used by OTP server



10. OK to save configuration
11. Check if the file radius_secret.txt exists in:
 c:\inetpub\wwwroot\Citrix\XenApp\conf
 If not, rename the file radius_secret.txt.sample to radius_secret.txt, edit the file and enter a shared secret (will be entered in the OTP server)

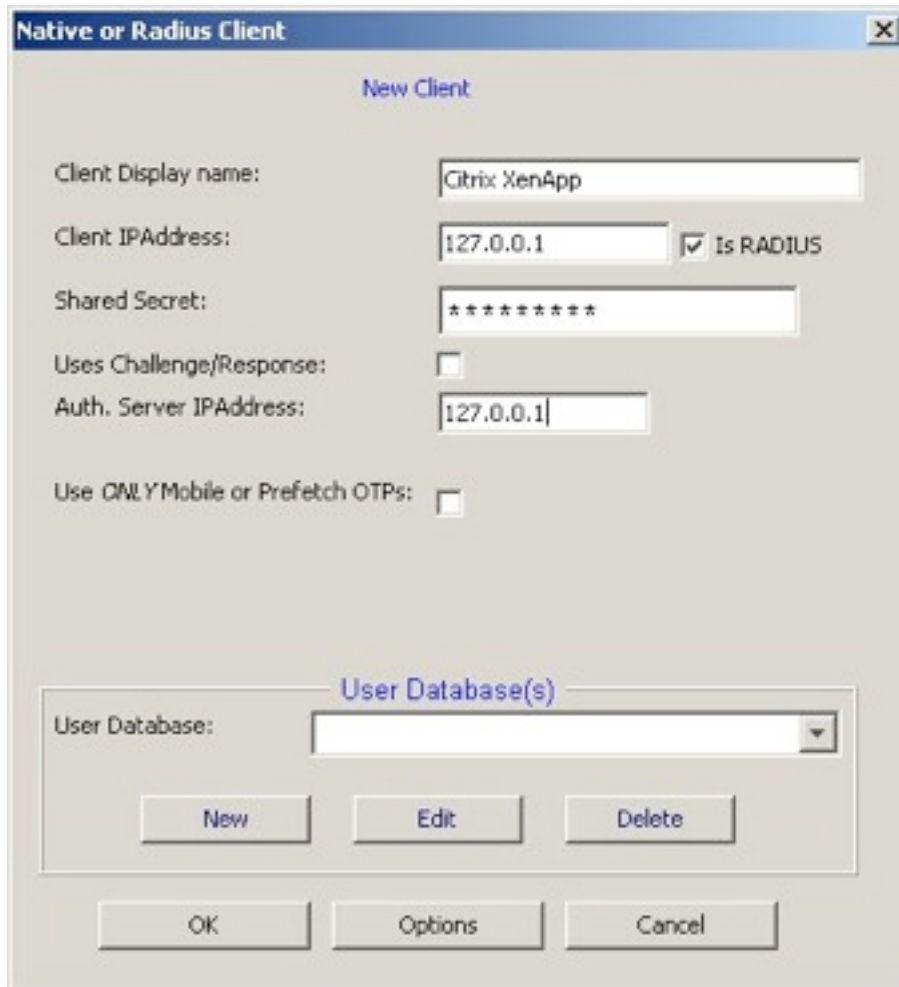
4.1.2. Configuring the NordicEdge® OTP-Server

Install NordicEdge® OTP-Server as described in the Installation documentation.

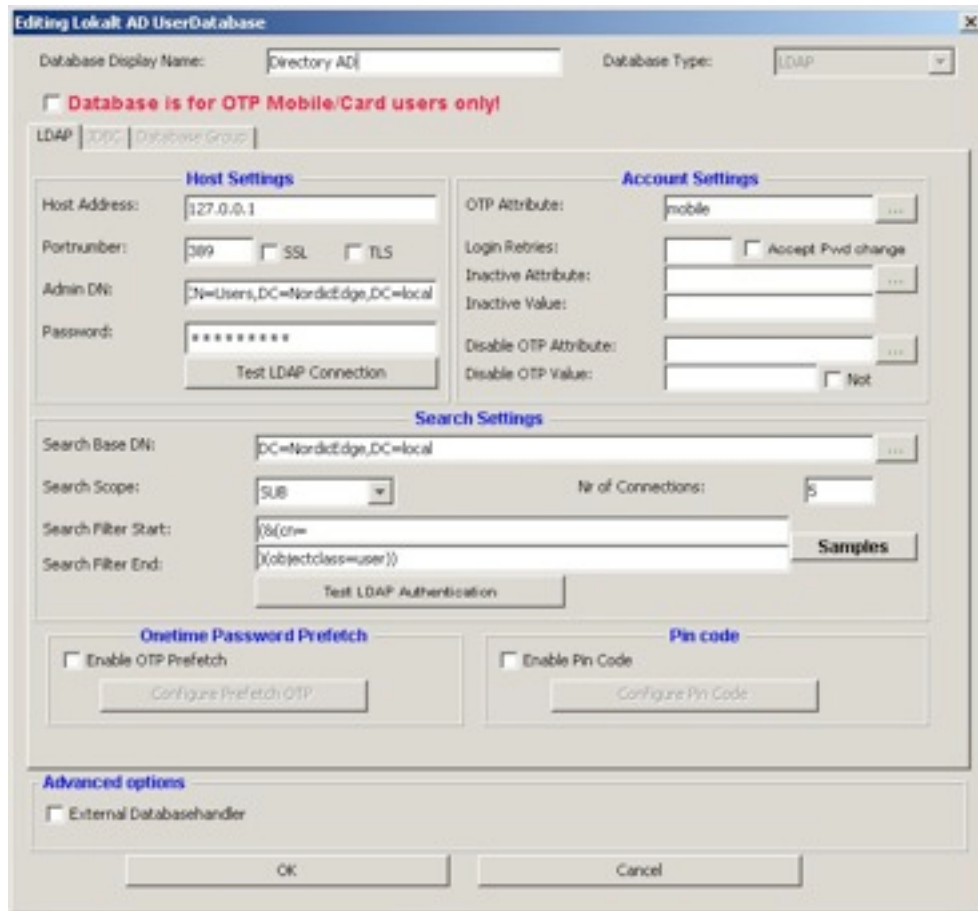
To set up the NordicEdge® OTP-Server.

1. Go to the "RADIUS & Client" tab
2. Enter the port configured in Citrix RADIUS setup
3. Press "Add Client", and enter:
 - a. client display name
 - b. the ip address of the Citrix XenApp server

- c. the shared secret (same as in radius_secret.txt)
- d. deslect the "Uses Challenge/Response"
- e. the ip adress of the Citrix XenApp server as "Auth Server IPAddress"



- 4. Press "New" to configure a new database:
- 5. Host Settings
 - Database Display Name – Enter a display name.
 - Host Address – The IP address to the LDAP directory.
 - Port number – The port number of the LDAP directory.
 - Admin DN – The admin DN.
 - Admin Password – The admin password.
 - Test LDAP Connection – Use this button to verify your LDAP settings.
- 6. Search Settings
 - Search Base DN – The DN where to start search for users.
 - Search Scope – What level of search, SUB, ONE or BASE.
 - Nr of Connections – The number of LDAP connections the OTP server should use.
 - Search Filter start – The start of the search filter to be used to authenticate users.
 - Search Filter end – The end of the search filter to be used to authenticate users.
- 7. Account Settings
 - OTP Attribute – The attribute on the user where to get the mobile number/mail address.



Editing Lokal: AD UserDatabase

Database Display Name: Directory AD Database Type: LDAP

Database is for OTP Mobile/Card users only

LDAP | 2007 | Database Group

Host Settings

Host Address: 127.0.0.1

Portnumber: 389 SSL TLS

Admin DN: CN=Users,DC=NordicEdge,DC=local

Password: *****

Test LDAP Connection

Account Settings

OTP Attribute: mobile

Login Retries: Accept Pwd change

Inactive Attribute:

Inactive Value:

Disable OTP Attribute:

Disable OTP Value: Not

Search Settings

Search Base DN: DC=NordicEdge,DC=local

Search Scope: SUB No of Connections: 5

Search Filter Start: (&(cn=

Search Filter End:)(objectclass=user))

Test LDAP Authentication

Onetime Password Prefetch

Enable OTP Prefetch

Configure Prefetch OTP

Pin code

Enable Pin Code

Configure Pin Code

Advanced options

External Databasehandler

OK Cancel

8. Press OK twice, and then Save.

5. Appendix A: Misc

5.1. Troubleshooting

For troubleshooting and support, please go to <http://www.nordicedge.se/support/kb>